

FOR TRAINING AND SHARING WITH SMALL GROUPS

EVANGELISMCUBE



THE BIG Kids' EE CUBE

ASSEMBLY INSTRUCTIONS

THE BIG Kids' EE-CUBE™ when fully assembled, is an 8 inch cube that folds out to an amazing 16 inches. Its size makes it perfect for training and sharing with small groups.

KIT INCLUDES
8 Cubelets (flat)
20 Tape/Label Tabs

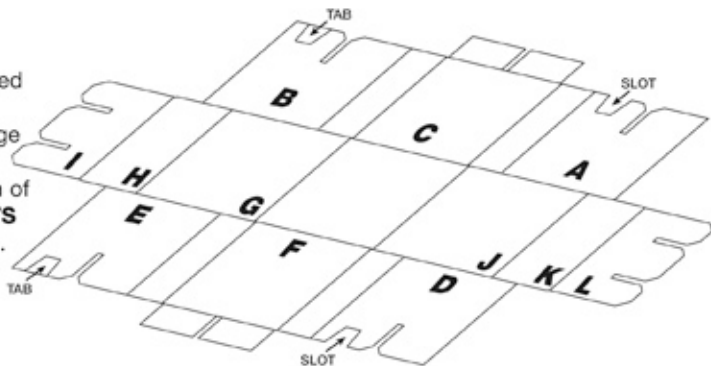
Simply follow the instructions on this sheet and you can help your group learn to...
"Simply Share Jesus."

Cubelet Assembly

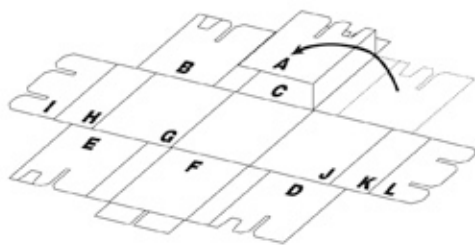
STEP 1:

Lay pre-assembled Cubelet on a flat surface with image side down

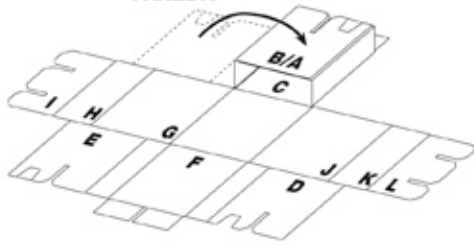
Note the position of **TABS** and **SLOTS** before you begin.



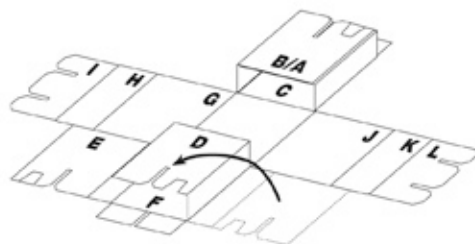
STEP 2: Fold **PANEL A** to center over **PANEL C**



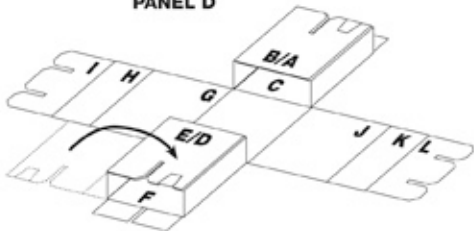
STEP 3: Fold **PANEL B** to center over **PANEL A**
Lock **TAB** on **PANEL B** into **SLOT** on **PANEL A**



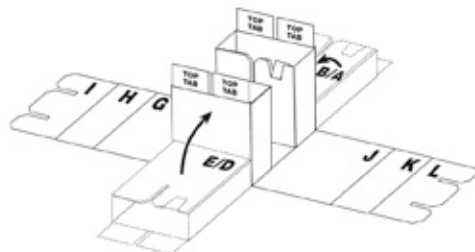
STEP 4: Fold **PANEL D** to center over **PANEL F**



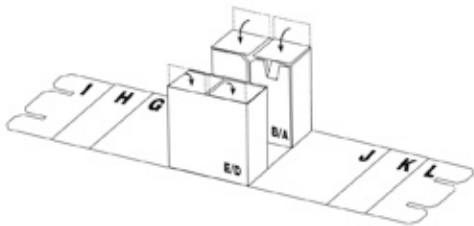
STEP 5: Fold **PANEL E** to center over **PANEL D**
Lock **TAB** on **PANEL E** into **SLOT** on **PANEL D**



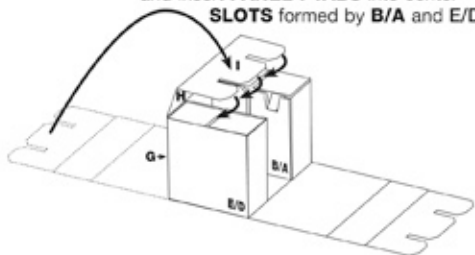
STEP 6: Fold **B/A** and **E/D** center to the vertical position



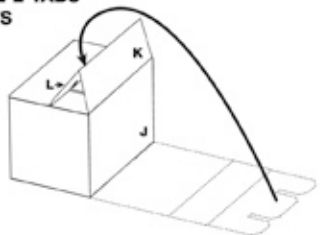
STEP 7: Fold **TOP TABS** down on top of **B/A** and **E/D**

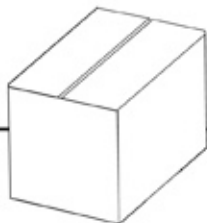


STEP 8: Fold **PANEL G** up, Fold **PANEL H** over, and insert **PANEL I TABS** into center **SLOTS** formed by **B/A** and **E/D**



STEP 9: Fold **PANEL J** up, fold **PANEL K** over, and insert **PANEL L TABS** into center **SLOTS** formed by **B/A** and **E/D**





The finished Cubelet should look like this.
CONGRATULATIONS! JUST 7 MORE TO GO!

CUBE Presentation Assembly

To prepare for assembly, arrange Cubelets numerically as shown. **Cubelets 1-4** comprise the front half of the Cube – **PANEL 1 (Heaven & Man)**. Cubelets 5-8 comprise the back half – **PANEL 7 (Steps for growth in Jesus)**

1



2



5



6



3

4

7

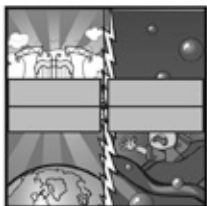
8

STEP 1: Flip **PANEL 7** upside-down and push the two stacks together back-to-back to complete the Cube. This will align all panels properly for assembly. Place pre-assembled Cube stack on a flat surface with **PANEL 1** facing up. Apply **TAPE/LABEL TABS** to **PANEL 1** as shown*.

***NOTE:**

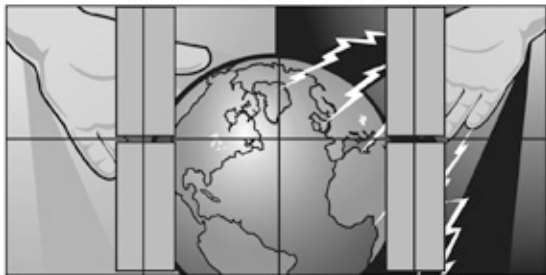
WHEN APPLYING TAPE/LABEL TABS, FIRMLY PRESS CUBE SURFACES TOGETHER TO ENSURE A TIGHT FIT FOR THE HINGES OF YOUR PRESENTATION CUBE.

Firmly rub down each **TAB** to the Cube surface creating a solid bond. This will maximize the life expectancy of your Presentation Cube.



STEP 2: ▶

Fold open to **PANEL 2** (*God*)
Apply **TABS** as shown



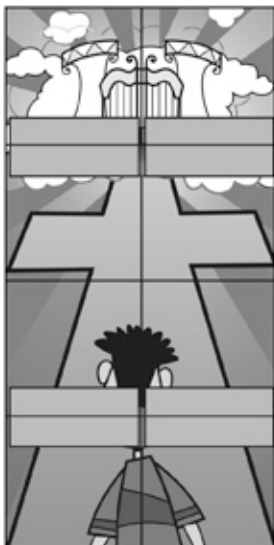
◀ STEP 3:

Fold open to **PANEL 3** (*Jesus*)
Apply **TABS** as show



STEP 4: ▲

Fold open to **PANEL 4**
(*Risen Jesus*)
Apply **TABS** as shown



**For any
questions
call us toll free:
1-888-354-9411**

STEP 5: ▲

Fold open to **PANEL 5**
(*Saving Faith*)
Apply **TABS** as shown

STEP 6: ▲

Fold open to **PANEL 6**
(*Trust Jesus*)
Apply **TABS** as shown



www.e3resources.org